



MORGAN ASSOCIATES

ESTATE & LETTINGS AGENCY



Roselands, Eldorado Road,
Cheltenham GL50 2PT
£1,200 Per Calendar Month



Roselands, Eldorado Road,

Cheltenham GL50 2PT

A well-presented ground floor apartment with allocated parking, conveniently located near Cheltenham Spa Station.

Situated in the popular area of Christchurch, this two-bedroom apartment enjoys a peaceful setting on a quiet, leafy road, with excellent access to the M5, and within easy reach of Montpellier and Tivoli's shops, cafés and restaurants.

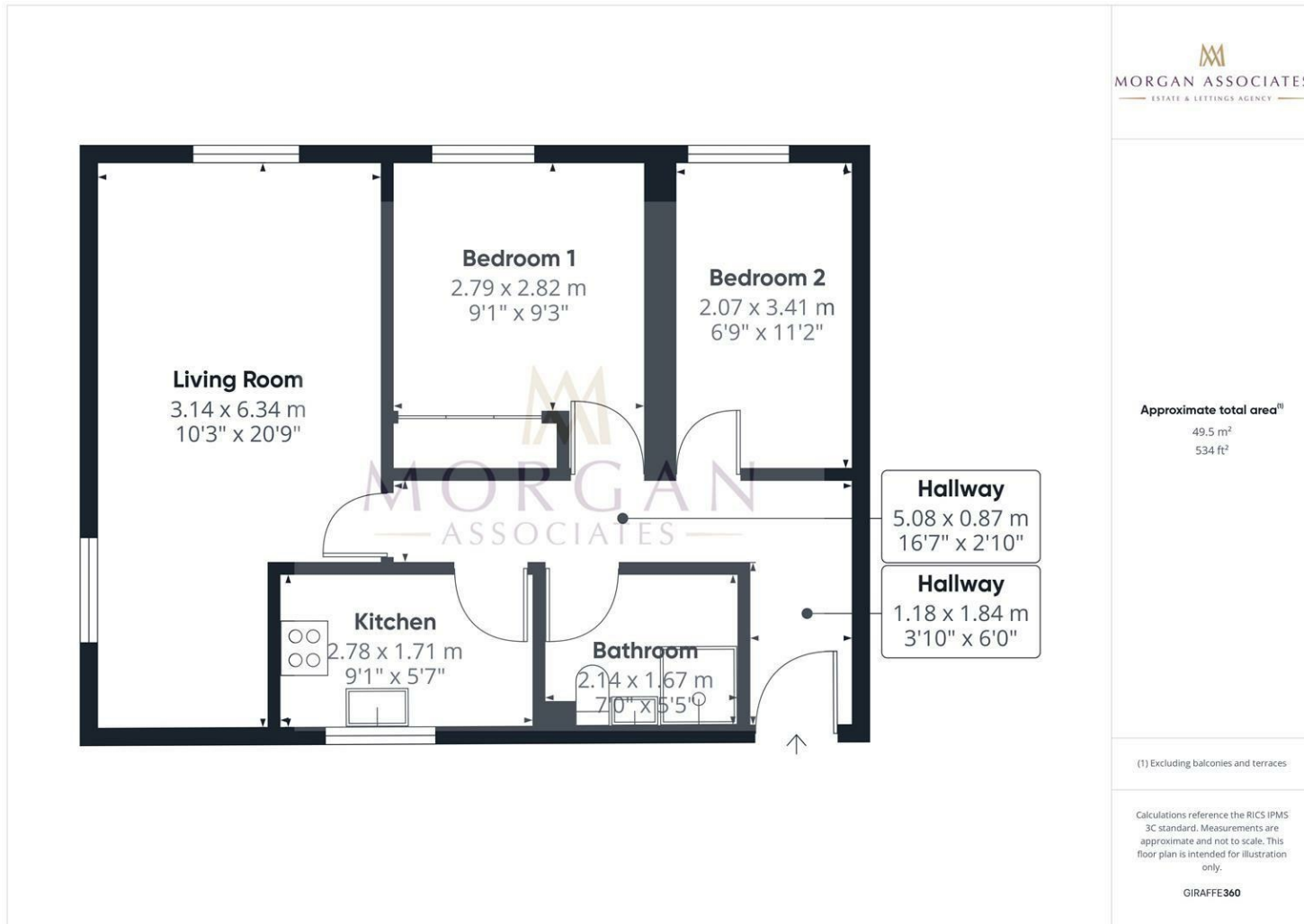
The accommodation is arranged on one level and comprises a modern, high-gloss handleless kitchen with integrated appliances, a light sitting room, one double bedroom, a large single bedroom / small double and a contemporary bathroom with a shower over the bath.

Externally, the property benefits from unallocated off-road parking for one car and is warmed by gas central heating throughout.

Offered unfurnished.



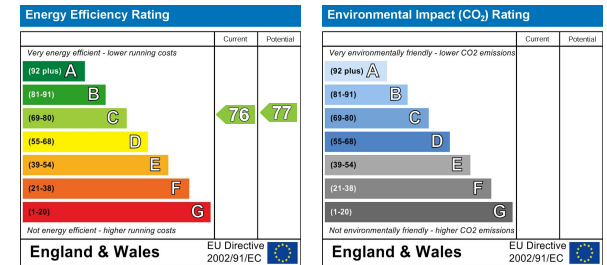
Floor Plan



MORGAN ASSOCIATES
ESTATE & LETTINGS AGENCY

Approximate total area^m
49.5 m²
534 ft²

Energy Efficiency Graph



Area Map



Viewing

Please contact us on 01242 514 285 if you wish to arrange a viewing appointment for this property or require further information.

Rotunda Buildings Montpellier Exchange
Cheltenham
Gloucestershire
GL50 1SJ

T. 01242 514 285
E. info@morgan-associates.co.uk
W. www.morgan-associates.co.uk

These particulars, whilst believed to be accurate are set out as a general outline only for guidance and do not constitute any part of an offer or contract. Intending purchasers should not rely on them as statements of representation of fact, but must satisfy themselves by inspection or otherwise as to their accuracy. No person in this firm's employment has the authority to make or give any representation or warranty in respect of the property.

